

End of Season Equipment Write-Ups: A Critical Step for Safe & Effective Winter Repairs

As we wrap up the season, it's vital that every operator and crew member understands the **importance of end-of-season equipment write-ups**. This step is more than just routine—it's a crucial part of ensuring **safety, equipment reliability**, and **efficient repair planning** during the winter months.

Why Are End-of-Season Write-Ups So Important?

Operator Knowledge is Invaluable

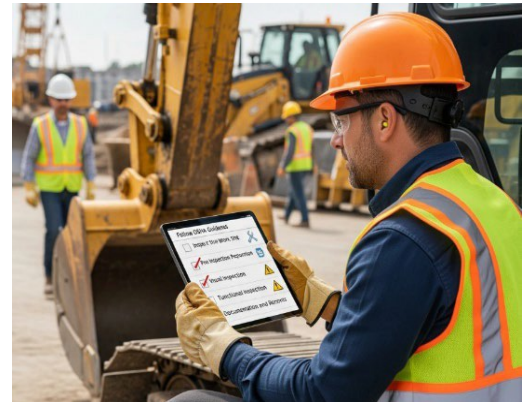
- No one knows the quirks, issues, and potential hazards of a machine better than the person who operates it daily.
- Your observations provide the first line of defense in identifying unsafe conditions, mechanical failures, or worn components that need attention.

Catch Problems Before They Become Hazards

- Issues with **guarding, safety alarms, warning systems**, and other protective devices are safety-critical.
- Worn or malfunctioning components such as **brakes, hydraulics, steering**, or **lights** may not fully fail now—but they could pose major risks if left unaddressed until spring.

Key Items to Include in Your Write-Ups

- **Safety Systems:**
 - Guards in place? Alarms/warning lights functioning? E-stop systems working?
- **Mechanical Concerns:**
 - Leaks, unusual noises, vibration, or poor performance.
 - Hydraulic, electrical, or drive system issues.
 - Tires/tracks, brakes, and steering concerns.
- **Operational Observations:**
 - Any recurring issues or “workarounds” you’ve been using.
 - Visibility issues (mirrors, cameras, lights).
 - Cab comfort or control responsiveness problems.



Why Documenting Now Makes a Difference Later

End-of-season write-ups feed directly into the planning and scheduling process for winter maintenance. Here's how your documentation impacts the repair strategy:

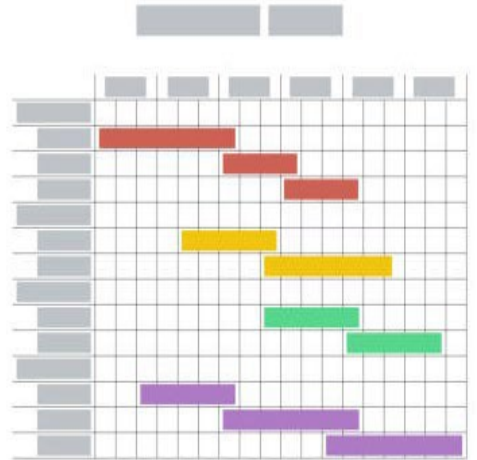
- **Parts Procurement & Lead Times**
 - Some replacement parts may take weeks or months to arrive.
 - Early identification allows time for ordering, avoiding delays in spring readiness.
- **Resource Leveling**
 - Winter maintenance requires scheduling mechanics with the right skill sets.
 - Your detailed write-up helps prioritize and assign work based on complexity and urgency.
- **Bay Space & Equipment Flow**
 - Maintenance bays are limited and must be scheduled efficiently.
 - Proper documentation helps maintenance managers sequence repairs, reduce bottlenecks, and minimize downtime.

Bottom Line: Your Input Keeps Everyone Safe

- A thorough write-up now ensures all safety and mechanical issues are addressed before next season.
- It prevents emergency repairs, equipment failures, and operator injuries in the future.
- You are the first and most important part of the safety chain.

Take Action Today

- **Don't wait.** As equipment comes off the job, take the time to do a complete inspection and write-up.
- Be specific, honest, and thorough.
- If it felt wrong, sounded odd, or looked unsafe—write it down.



Winter is when we prepare to succeed in the spring. But we can only fix what we know about. Your write-up might be the one that prevents an accident, avoids a breakdown, or saves someone's life next season.

Take the time. Make it count.

Toolbox Talk Attendance Form

